

The EFP-25AC 1" non-metallic diaphragm pump is constructed in a **Polypropylene** wetted body centre section - with a three piece manifold design.

Capable of offering upto 177.9 LPM flow rate.

PUMP SPECIFICATIONS

PORT SIZE

- 1" ANSI/DIN Flange

MAX FREE FLOW ON WATER AT 20°C/68°F

- 177 lpm / 47 USGPM

(on some models 20% reduction should PTFE Diaphragms be fitted)

MAX WORKING PRESSURE @ 20°C/68°F

- 120psi (8.3 bsr)

PUMP BODY MIN/MAX WORKING TEMP

- Polypropylene - 4-107°C / 40-225°F

MAX PUMPABLE PARTICLE SIZE

- 3.2mm / 1/8"

AIR INLET PORT SIZE

- 1/4" BSPT female

MAX SOUND POWER LEVEL (DBA - ISO 9614-2)

- 64.5 dBA

(at max air inlet pressure - will reduce with air pressure)

BODY MATERIALS AVAILABLE AND WEIGHT

- Polypropylene - 9.2 kg

DIAPHRAGM & CHECK VALVE MATERIALS AVAILABLE

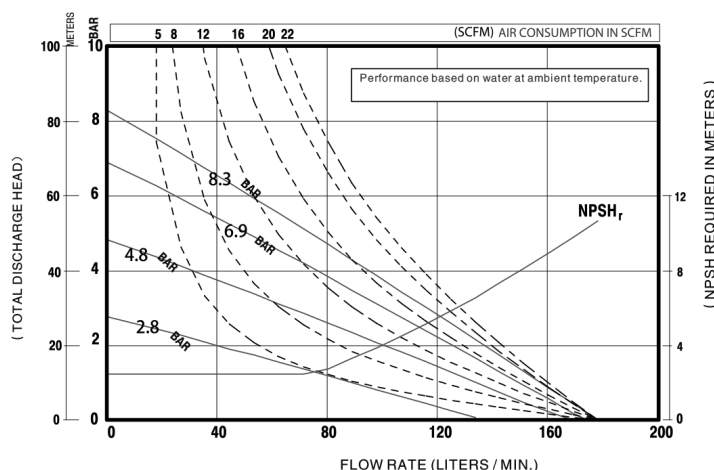
- Stainless Steel
- PTFE
- Santoprene
- Nitrile



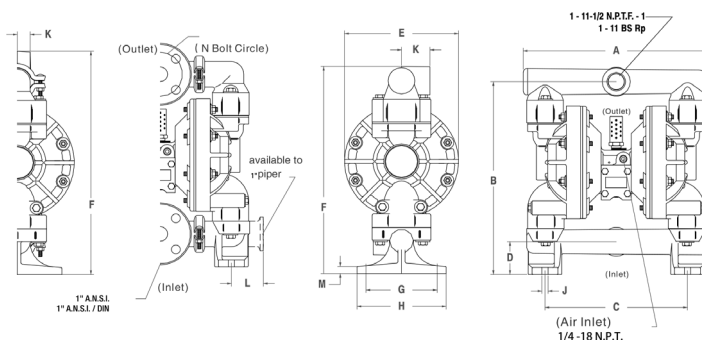
Polypropylene
EFP-25AC-PP-XX-XX-XX

PERFORMANCE CURVE

Pump tested in water with inlet submerged



GA DRAWINGS



Port Size	Air Inlet Size	A	B	C	D	E	F	G	H	I	J	K	L	M
		mm	mm	mm	mm	mm	mm	mm	mm	mm	mm	mm	mm	mm
1" ANSI/DIN Flange	1/4" BSP(F)	334	350	255	60	204	376	128	160	11	51	57	13	80