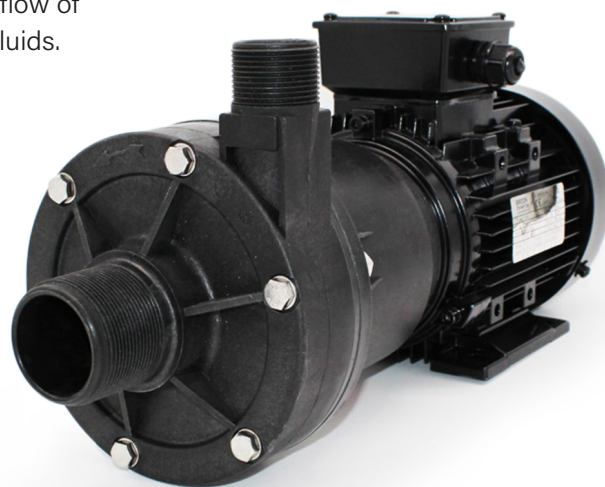


For heavy duty applications requiring safe, leak-free, continuous flow of aggressive chemicals, acids, solvents, alkalis, sterile and chilled fluids.

FEATURES

- Manufactured in chemical resistant thermo-plastics – entirely non-metallic
- Magnetic couplings provide an energy efficient thermal shield, minimising heat transfer to the pumped fluid
- IP55 standard motor housing
- PPS spindle housing
- High SG versions available



MATERIALS

- FKM 'O' ring, EPDM optional
- PP encapsulated magnet, PVDF optional
- PP pump housing, PVDF optional
- PPS spindle housing
- Alumina ceramic spindle & thrust washers

AVAILABLE OPTIONS

- 110 Volt / 1 Phase / 50 Hertz
- 230 Volt / 1 Phase / 50 Hertz
- 400 Volt / 3 Phase / 50-60 Hertz

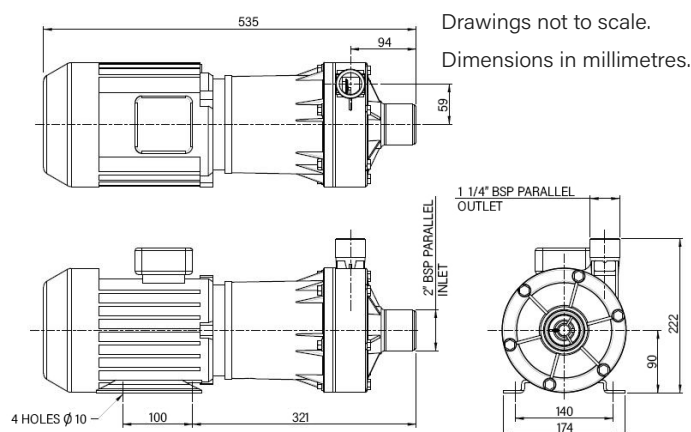
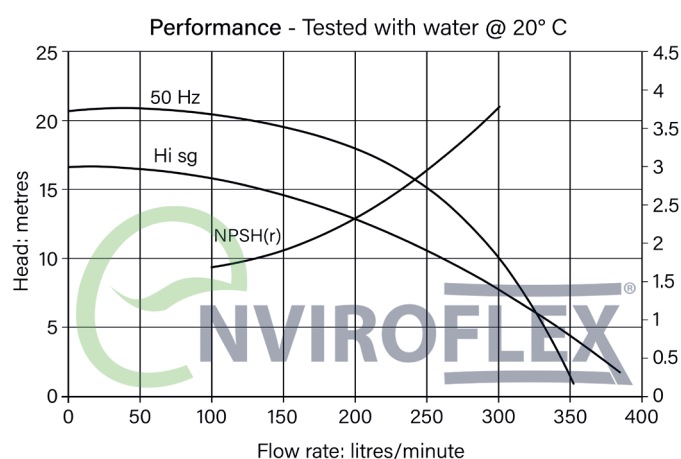
NOTES

These magnetically coupled pumps are designed for use with clean fluids.

Solids will cause jamming. Abrasives will reduce pump life and invalidate the warranty.

NEMP pumps are not self priming and are not designed to run dry.

The company reserves the right to change specifications.



*Assuming maximum viscosity of 30cp.

MODEL	Overall height (mm)	Overall length (mm)	Overall width (mm)	Weight (kg)	Max body pressure (bar)	Run-out flow rate (l/min)	Closed valve head (m)	Max temp	*Max specific gravity	Motor output (watts)
NEMP 300/20	222	535	174	18.0	3.0	350	21	70	1.2	1500