

### 28420 Series

#### Hygienic Stainless Steel Head Kit Pump

##### Features

- Self primes from dry up to 5.0 metres
- Flows up to 200 litres per minute
- Pressure up to 2.5 bar†
- Handles soft solids - max. 16mm diameter
- Certified to US 3A Standard 02-10
- Easy strip clean
- Handles viscosities up to 10,000 centiPoise
- Minimal shear to thixotropic fluids
- Fits IEC standard motor B3/B14, frame 90



##### Typical Applications

- Foods, sauces, doughs, preserves, liquid egg, meat pastes
- Dairy products, milk, cream, yoghurt, cheeses
- Cosmetics, toothpaste, shampoos, soaps
- Pharmaceutical creams & lotions
- Wines, beers, soft drinks, fruit juices & syrups
- Ingredients unloading and transfer
- Tank filling and emptying
- Recirculation and mixing
- Portion and container filling
- Brine injection
- Sampling, filtration and more

##### Specifications

**Seal** : Carbon / Ceramic mechanical face seal  
Tungsten Carbide / Ceramic hard faced seal  
Flushed options for crystallising fluids

**Seal Elastomer** : Food grade Nitrile

**Pump Head** : Stainless steel 316, machined interior and electropolished exterior finish

**End Cover** : Stainless steel 316 grade

**Shaft** : Stainless steel 316 grade shaft extension

**Bearings** : Uses motor bearings

**Motor Adaptor** : Epoxy coated cast iron

<b>Ports</b> :	1½"	Tri-Clamp	28420-1xxx
	38mm	IDF/ISS	28420-3xxx
	1½"	RJT to BS1864	28420-4xxx
	1½"	3A Bevel Seat	28420-5xxx
	40mm	DIN 11851	28420-6xxx
	38mm	SMS 1145	28420-7xxx

##### Model Range

**Weight** : 6.6kg

Pressure options	Medium - Max 2.5 bar†			
Elastomer option	3A Neoprene	E.P.D.M.		
Temperature range	4°C to 70°C	4°C to 100°C		
Mechanical Seal Options				
Carbon/Ceramic	28420-x115			
Tungsten Carbide/Ceramic hard faced	28420-x215			
Flushed Mechanical Seal				
Tungsten Carbide/Ceramic hard faced	28420-x715			
Carbon/Ceramic				
For models not listed above, consult distributor or factory, 'x' Substitute port code from table above				
Note : it is not recommended to start the pump at extremes of the temperature range, impeller damage may occur				
For Installation, Operating, Maintenance and Safety Instructions refer to form 43001-0543				

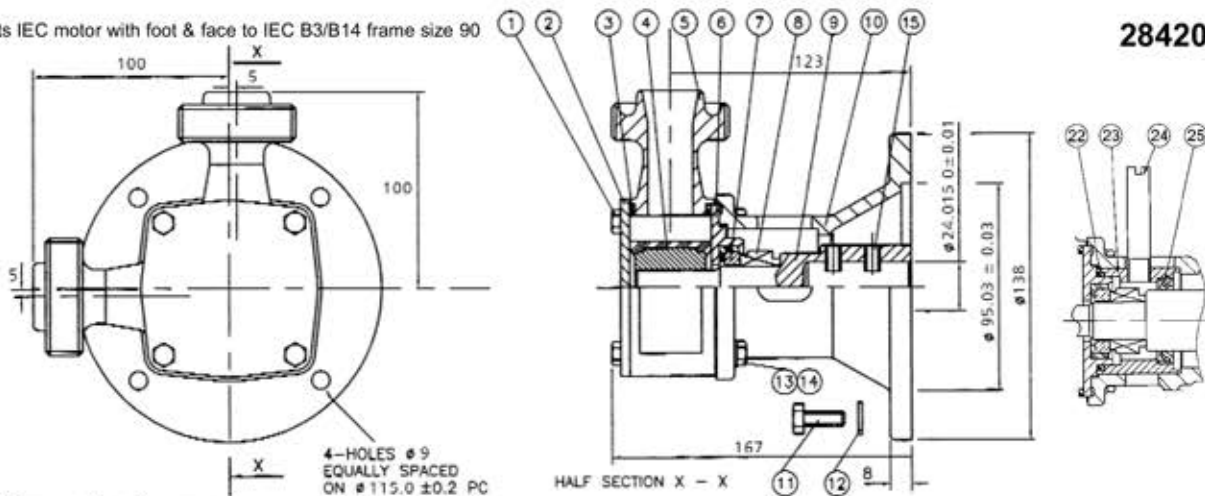


**WARNING** Explosion hazard. Do not pump gasoline, solvents, thinners or other flammable liquids. To do so can cause an explosion resulting in injury or death.

† Pressures over 1.4 bar may reduce motor shaft life

Fits IEC motor with foot & face to IEC B3/B14 frame size 90

**28420 Series**



Dimensions in mm

For performance data refer to the 200 size flexible impeller pump performance curves

### Parts List

Key	Description	Qty	Part Number
1	Screw	4	X3001-207F
2	Endcover	1	28405-0020
3	O'Ring *	2	See right
4	Impeller*	1	See right
5	Body	1	See right
6	Wearplate	1	28436-0000
7 / 8	Seal Assembly *	1	See right
9	Shaft Extension	1	28427-0001
10	Motor Adaptor	1	28423-0000
11	Screw	4	X3001-209F
12	Washer	4	X3080-101K
13	Screw	4	X3001-209F
14	Washer	4	X3080-101F
15	Set Screw	2	X3009-207A
22	O-Ring	1	X4020-261A
23	Seal Housing	1	28412-0000
24	Tube	2	21844
25	Seal	1	SP2701-0915

Parts marked \* Contained in service kit

### Spare Parts & Service Kits

Pressure Rating	Medium	
3 O-Ring	Nitrile	X4020-399A
4 Impeller	3A Neoprene	14346-0005B
	E.P.D.M.	14346-0002B
	Tri-Clamp	28404-1000
	IDF/ISS	28404-3000
	RJT	28404-4000
	Bevel Seat	28404-5000
	DIN	28404-6000
	SMS	28404-7000
7 / 8 Seals	Std Mech.	28431-0103B
	Hard Faced	28431-0203B
Service Kit	3A Neoprene	SK378-0115
	E.P.D.M.	

Models with Neoprene and E.P.D.M. impellers use Nitrile elastomers on seals and O-rings.

NOTE:- Service Kits contain standard mechanical seals. For hard faced seals, order parts separately.

### Other Available Options

Pedestal pumps, for higher pressure capability.

Jabsco, 1 Kondelin Road, Cape Ann Industrial Park, Gloucester, MA 01930  
Tel : +1 978 281 0440 Fax : +1 978 283 2619

Jabsco, Bingley Road, Hoddesdon, Hertfordshire, EN11 0BU  
Tel : +44 (0)1992 450145 Fax : +44 (0)1992 467132

Fluid Products Canada, 55 Royal Road, Guelph, Ontario N1H 1T1  
Tel : +1 519 821 1900 Fax : +1 519 821 5316

NHK Jabsco Co Ltd, 3-21-10, Shin - Yokohama, Kohoku-ku, Yokohama 222  
Tel : +81 (0) 45 475 8906 Fax : +81 (0) 45 475 8908

Jabsco GmbH, Oststraße 28, 22844 Norderstedt  
Tel : +49 (0) 40 53 53 73 0 Fax : +49 (0) 40 53 53 73 11

Jabsco Italia, s.r.l., Via Tommaseo, 6, 20059 Vimercate, Milano  
Tel : +39 039 685 2323 Fax : +39 039 666 307

USA

UK

CANADA

JAPAN

GERMANY

ITALY