



Important Safety Instructions

Before beginning, read all warnings and instructions in this manual and in your related equipment manuals. Save all instructions. This manual is only a guide for kit installation. See your EP2 Hose Pump manual for complete warnings and repair instructions.

Hose Replacement Kits

406937B

EN

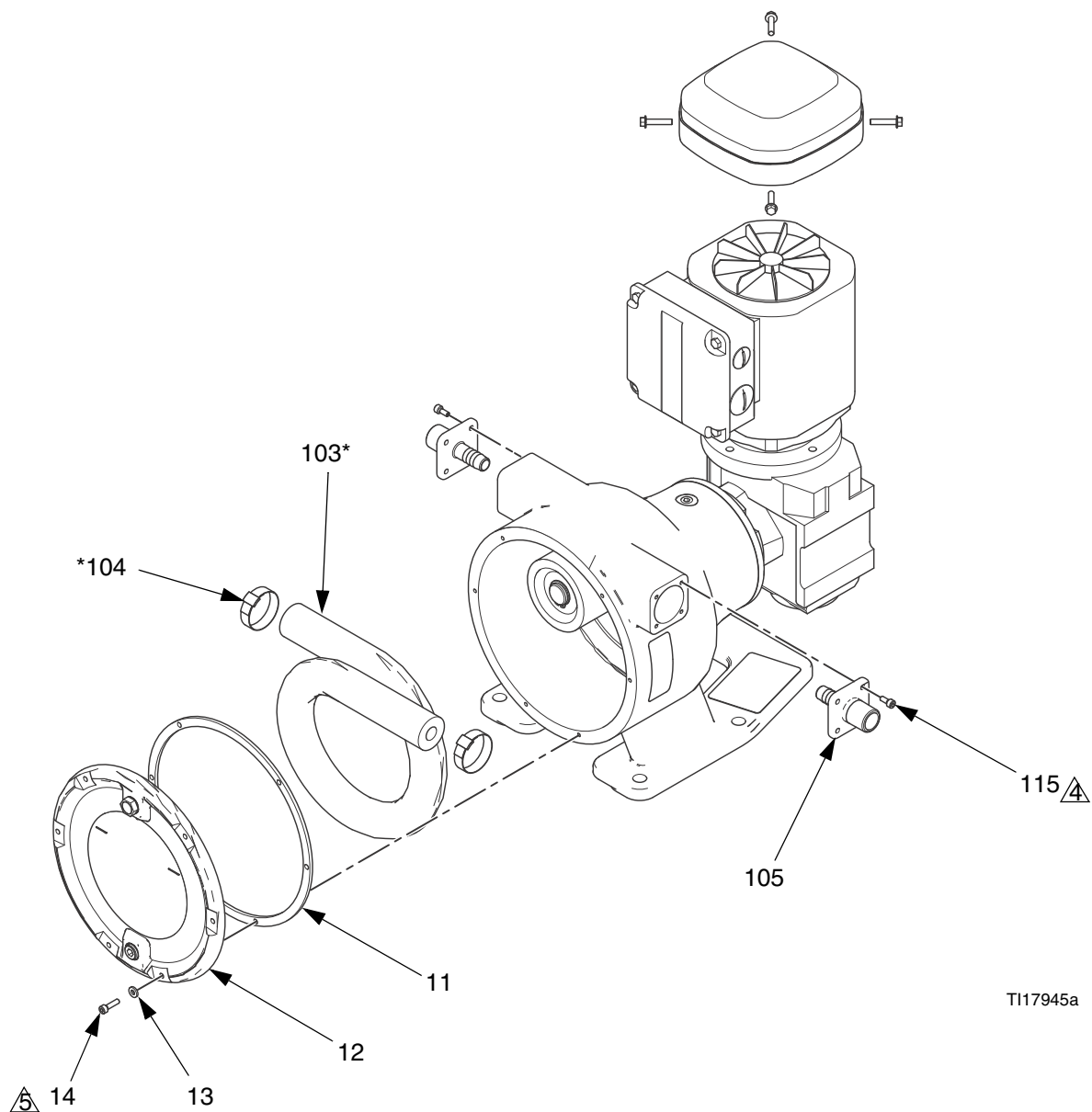
To replace the hose in Model EP2006, EP2010, and EP2013 Hose Pumps. See List of Kit Part Numbers at right. For professional use only.

NOTE: See page 2 for drawing of pump assembly showing kit parts and location. Parts included in the kit are marked with an asterisk (*).

Ref.	Description	Qty
103*	HOSE; see list at right	1
104*	CLAMP, hose	2

Pump Model	Hose Kit Part No.	Hose Inner Material	Hose Stripe Color
EP2006 (6 mm ID Hose)	24K482	Natural Rubber	None
	24K483	EPDM	Blue
	24K484	Nitrile	Yellow
	24K485	Food Grade EPDM*	Blue
	24K486	Food Grade Nitrile*	Yellow
	24K487	CSM	Orange
	24K488	UHMWPE	White
	24K489	Neoprene	Green
	24R157	Food Grade Neoprene*	Green
EP2010 (10 mm ID Hose)	24K492	Natural Rubber	None
	24K493	EPDM	Blue
	24K494	Nitrile	Yellow
	24K495	Food Grade EPDM*	Blue
	24K496	Food Grade Nitrile*	Yellow
	24K497	CSM	Orange
	24K498	UHMWPE	White
	24K499	Neoprene	Green
	24R158	Food Grade Neoprene*	Green
EP2013 (13 mm ID Hose)	24K502	Natural Rubber	None
	24K503	EPDM	Blue
	24K504	Nitrile	Yellow
	24K505	Food Grade EPDM*	Blue
	24K506	Food Grade Nitrile*	Yellow
	24K507	CSM	Orange
	24K508	UHMWPE	White
	24K509	Neoprene	Green
	24R159	Food Grade Neoprene*	Green

* Food grade hose inner material is white in color.



TI17945a

△4 Torque to 115 in-lb (13.0 N•m).

△5 Torque to 25 in-lb (2.8 N•m).

*All written and visual data contained in this document reflects the latest product information available at the time of publication.
Graco reserves the right to make changes at any time without notice.*

Original instructions. This manual contains English. MM 406937

Graco Headquarters: Minneapolis
International Offices: Belgium, China, Japan, Korea

GRACO INC. AND SUBSIDIARIES • P.O. BOX 1441 • MINNEAPOLIS, MN 55440-1441 • USA

Copyright 2011, Graco Inc. All Graco manufacturing locations are registered to ISO 9001.

www.graco.com

Revision B, February 2013